



D Y N A F A M I L Y

SM32X

USB Flash Disk Utility

User's Manual

Revision: 1.1

Updated: April 10, 2009

Notice

Silicon Motion, Inc. has made its best efforts to ensure that the information contained in this document is accurate and reliable. However, the information is subject to change without notice. No responsibility is assumed by Silicon Motion, Inc. for the use of this information, nor for infringements of patents or other rights of third parties.

**Copyright
Notice**

Copyright 2009, Silicon Motion, Inc. All rights reserved. No part of this publication may be reproduced, photocopied, or transmitted in any form, without the prior written consent of Silicon Motion, Inc. Silicon Motion, Inc. reserves the right to make changes to the product specification without reservation and without notice to our users.

Revision No.	Date	Note
1.0	Mar. 2009	Preliminary release

All rights strictly reserved. No portion of this paper may be reproduced, copied, or translated into any other form without permission from Silicon Motion, Inc.

SMI CONFIDENTIAL

1. Outline

1.1 System Requirements

- Windows 98/ME/2000/XP/Vista
- USB 2.0 Host, USB HUB

1.2 Multilingual Support

- Simplified Chinese 、 Traditional Chinese 、 and English

1.3 Disk Partitioning

- UFD Utility can be used to partition UFD into 2 kinds of partitioning types. Please read instructions below before partitioning.
- Public Area Default setting is no security restrictions. User can use entire memory area as public area
- Security Area data in Security Area is protected by password.
- Public Area + Security Area

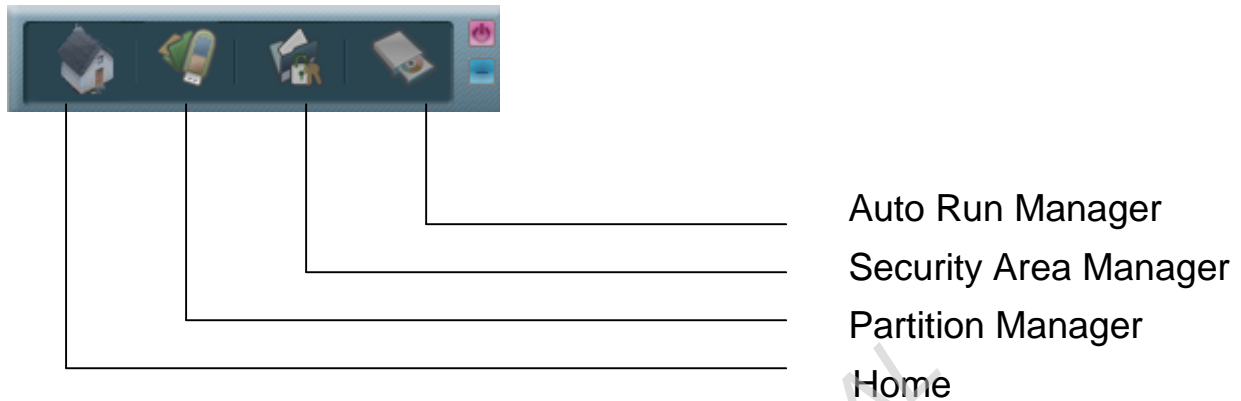
UFD can be partitioned into 2 areas, Public area and Security area. All data stored in Security area is protected by password. However, the Public area has no restrictions in access.

1.4 Note

- UFD, used in the article, stands for USB FLASH DISK.
- Please be aware that some utility functions will format the UFD after executing the UFDUtility.exe. Please backup all data in the UFD before executing the program.

2. Icon Descriptions of the UFD Utility

The descriptions for each icon after plug in UFD and execute uDiskToolBar.exe was list below.



2.1 Home

- The function can login <http://www.segon.net> in internet.

2.2 Partition Manager

- The icon is able to use to partition UFD into “public area” only or “public area + security area”. It supports to modify disk label and password for security area.

2.3 Security Area Manager

- The icon is able to Login security area after correct password key in and logout after data access for protection.

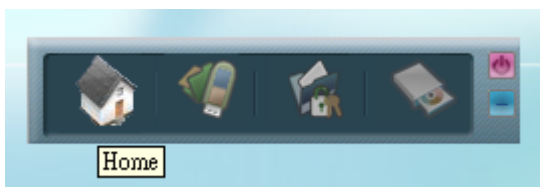
2.4 Auto Run Manager

- Create virtual CDROM partition with auto-run feature embedded on top of “Partition Manager” made 1 or 2 partition areas. This tool also supports ISO image file making and one single “Removable Disk” default setting call back function.

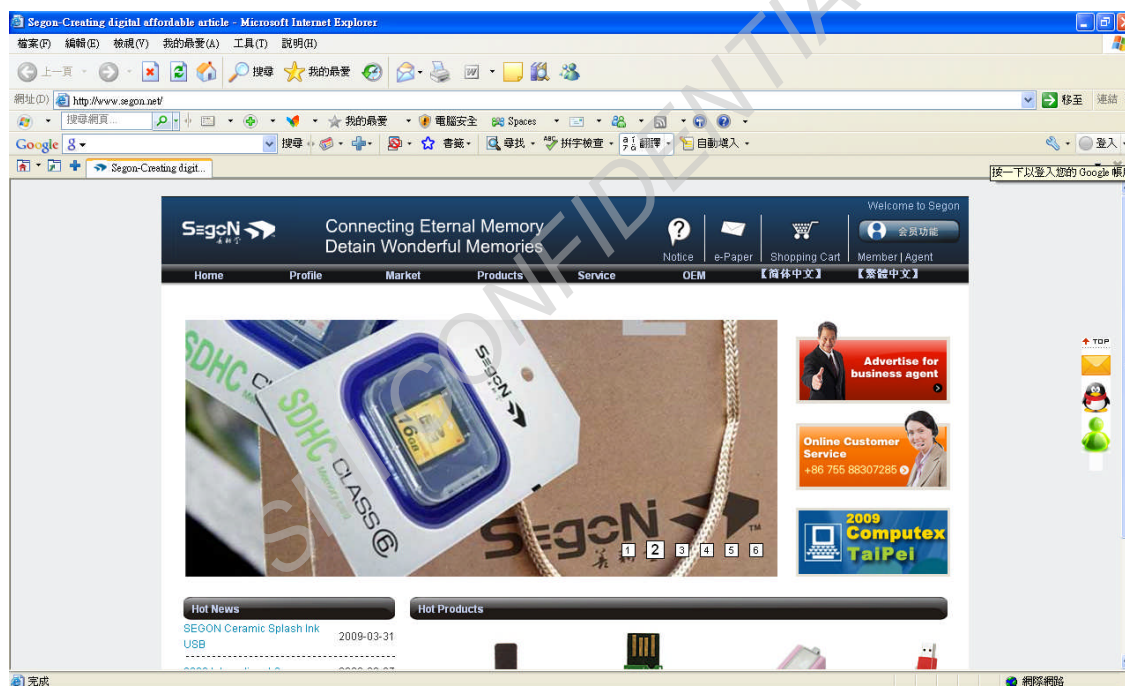
3. UFD Utility Operation manual

3.1 Introduction of Home

- Click "Home" on the UFD Utility bar.

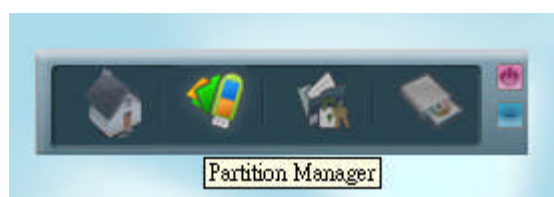


- The browser will open automatically and login in <http://www.segon.net>.

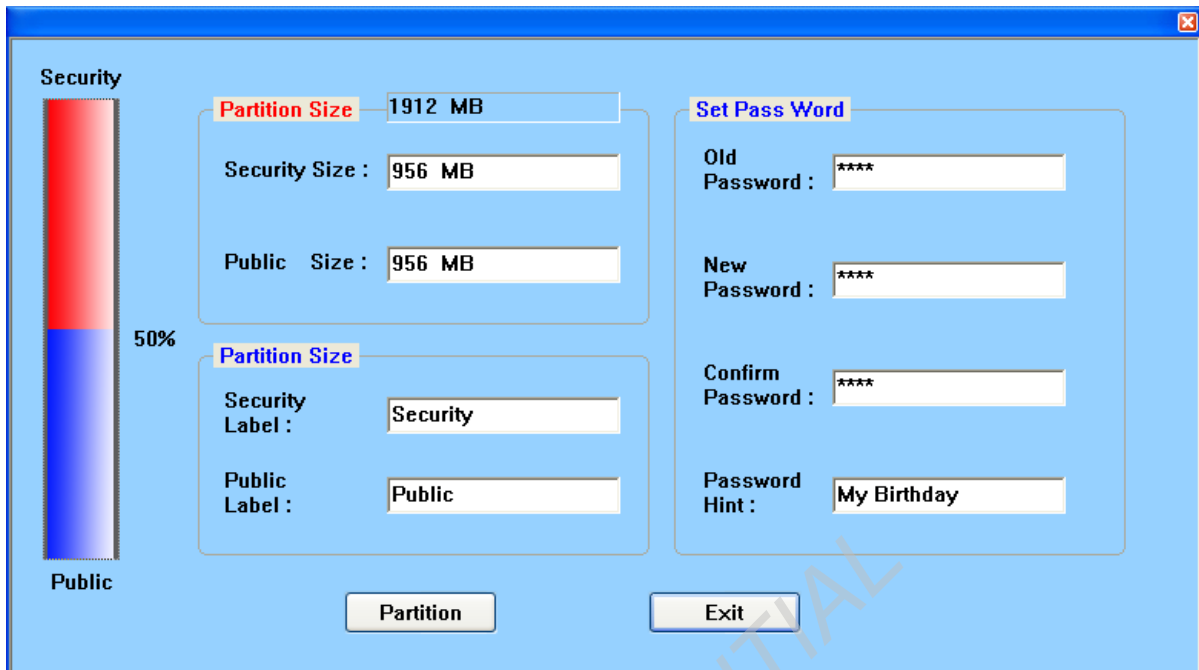


3.2 Introduction of Partition Manager

- Click "Partition Manager" on the UFD Utility bar.



- “Partition manager” window will pop up right after click as below.

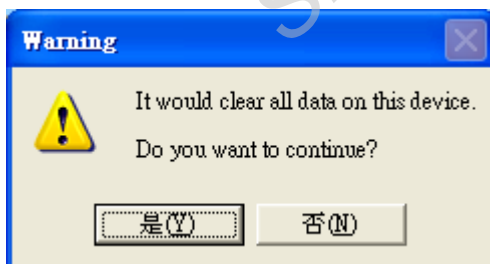


The Partition manager window is a blue-themed dialog box. On the left, there is a vertical slider bar with a red top half and a blue bottom half, labeled 'Security' at the top and 'Public' at the bottom, with a '50%' mark in the middle. The main area contains three sections:

- Partition Size** (red header): '1912 MB' in a text box.
- Security Size**: '956 MB' in a text box.
- Public Size**: '956 MB' in a text box.
- Security Label**: 'Security' in a text box.
- Public Label**: 'Public' in a text box.
- Set Pass Word** (blue header):
 - Old Password**: '****' in a text box.
 - New Password**: '****' in a text box.
 - Confirm Password**: '****' in a text box.
 - Password Hint**: 'My Birthday' in a text box.

 At the bottom are two buttons: 'Partition' and 'Exit'.

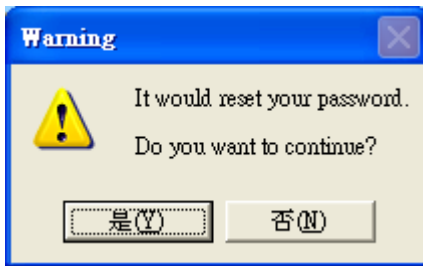
- Use keyboard (↑,↓,←,→) or mouse to adjust public or security area capacity.
- Input old password 、 new password 、 confirm password and password hint.
- User may enter or modify the disk label for each area
- Click “Partition” button to execute it.
- A warning message prompts user to backup all the data before partition.



- After Click “Y”, it will appear partition successful in a few second.



- After click “Y”, it will appear need re-setting password or not.



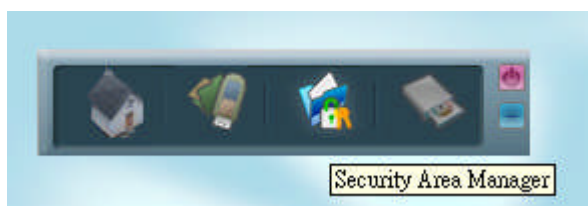
- After click “Y”, it will set input password, after confirm pass, it will point out modify password successfully.



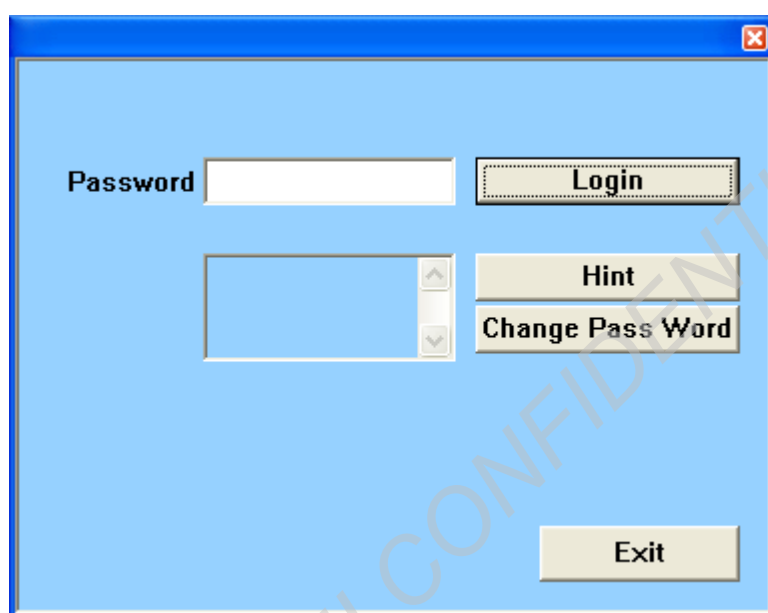
- If click “N”, it still keep the text “0000” of password.
- After click “N”, it will eject the partition management window

3.3 Instructions of Security Manager

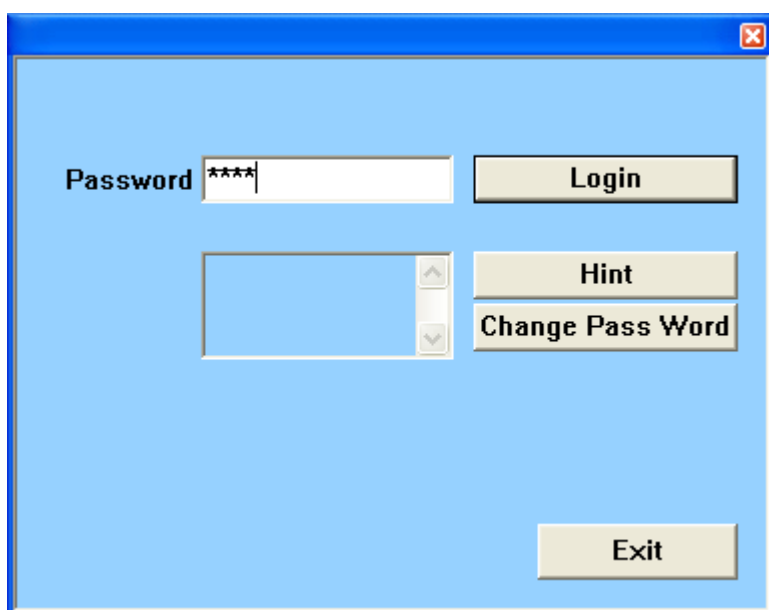
- Click “Security Area Manager” on the UFD Utility bar.



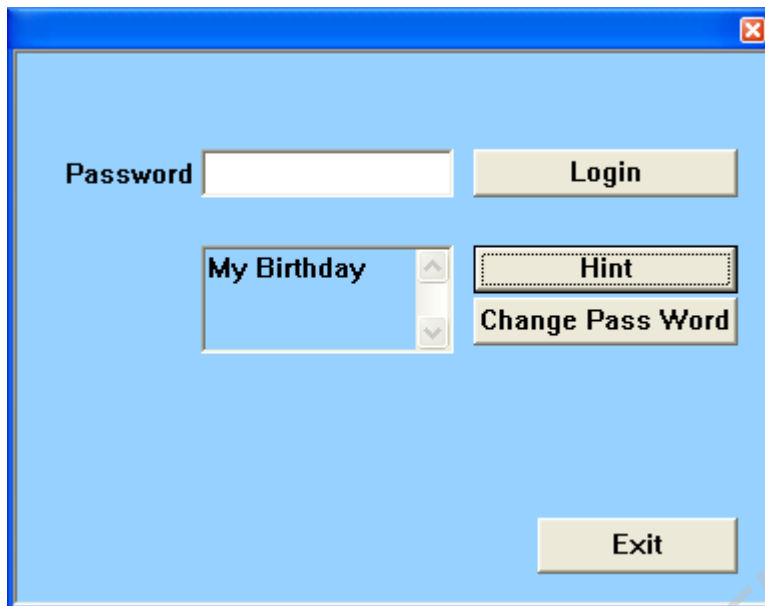
- Popup “Security Management” window



3.3.1 Log in Security area



- Click “Hint” to recall the password, if the password was set but forget.

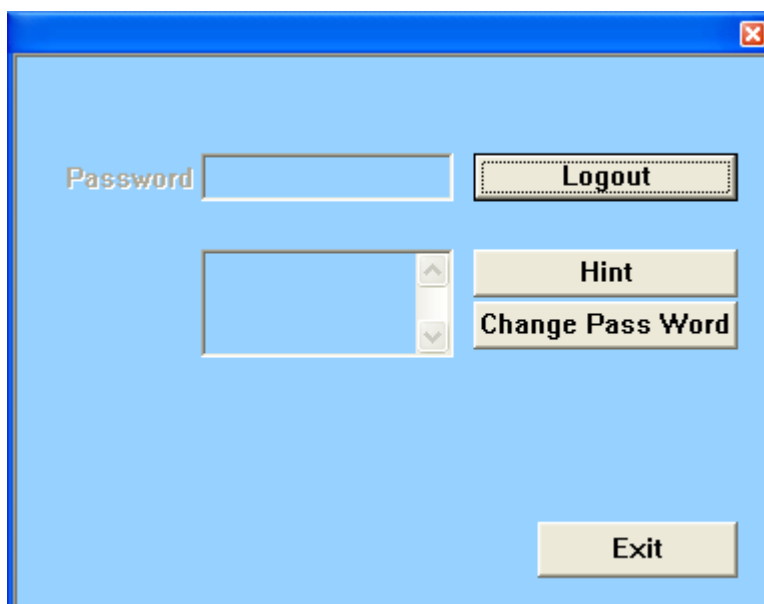


- Input the correct password to log into security area.



3.3.2 Log out security area.

- Click “Logout” in security area.

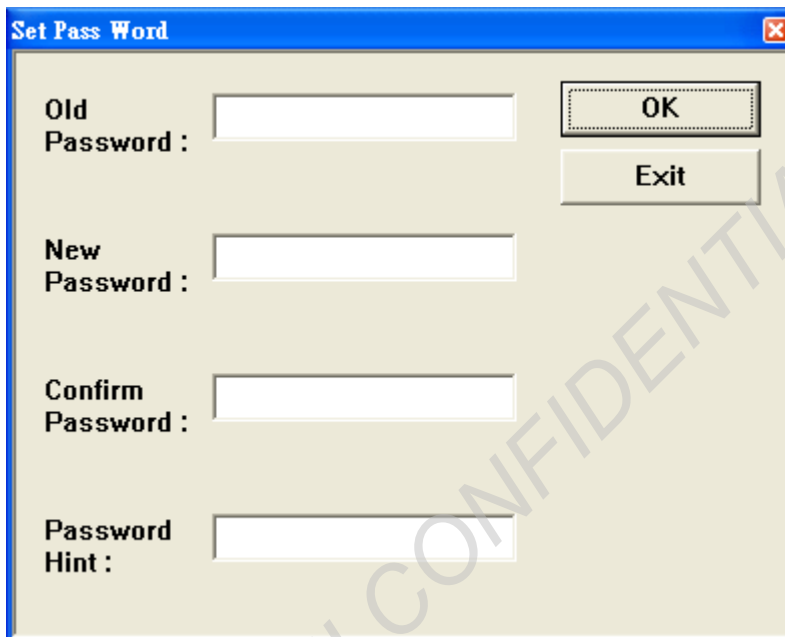


- It will be show logout success, and then exit security area, back in public area.

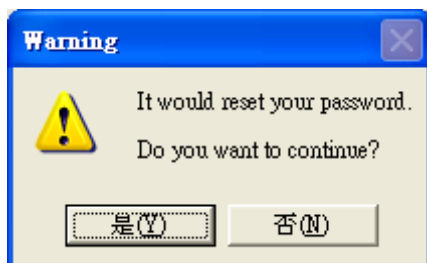


3.3.3 Modify password

- Use can click "Change Pass Word" to modify password; the "Set Pass Word" window will be popup.



- It will be point out warning message window after input old password 、 new password 、 confirm password and password hint, then click.



- After click "Y", the system will show change password success with popup window.



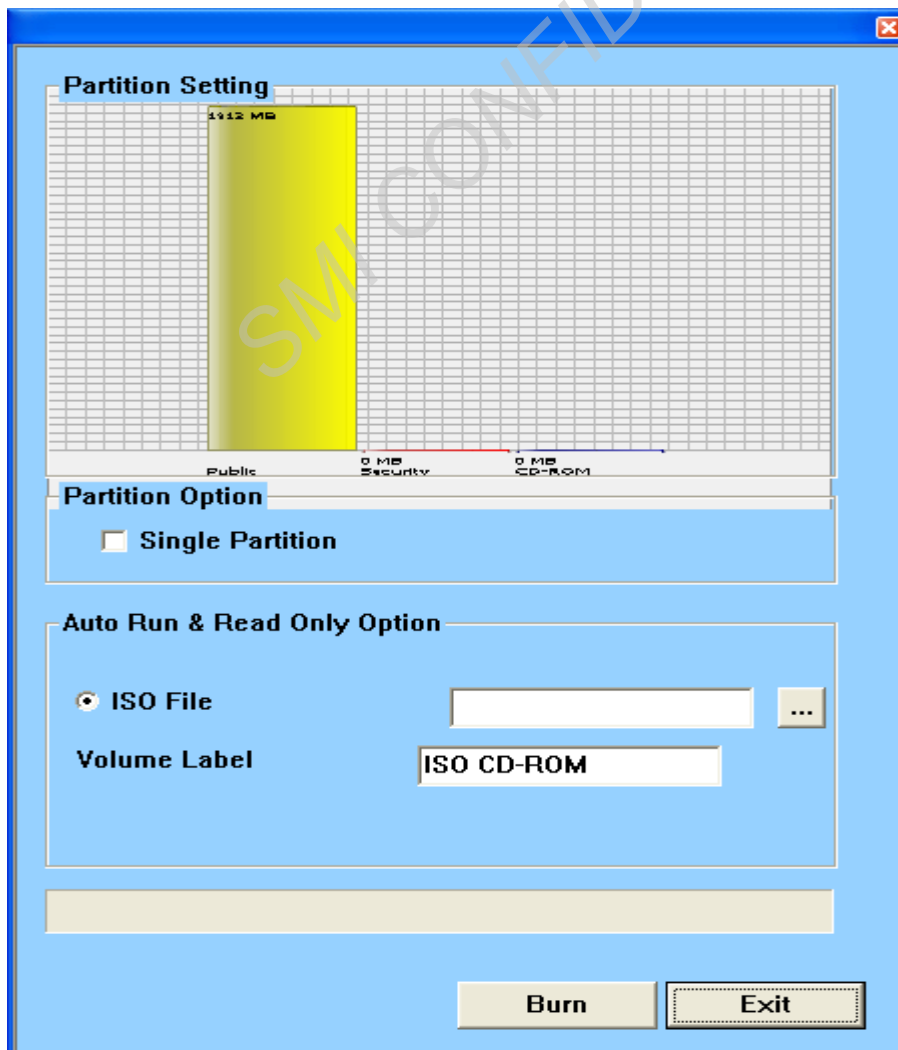
3.4 Instructions of AutoRun Manager

3.4.1 To use the existing ISO file to create a virtual CDROM for Autorun

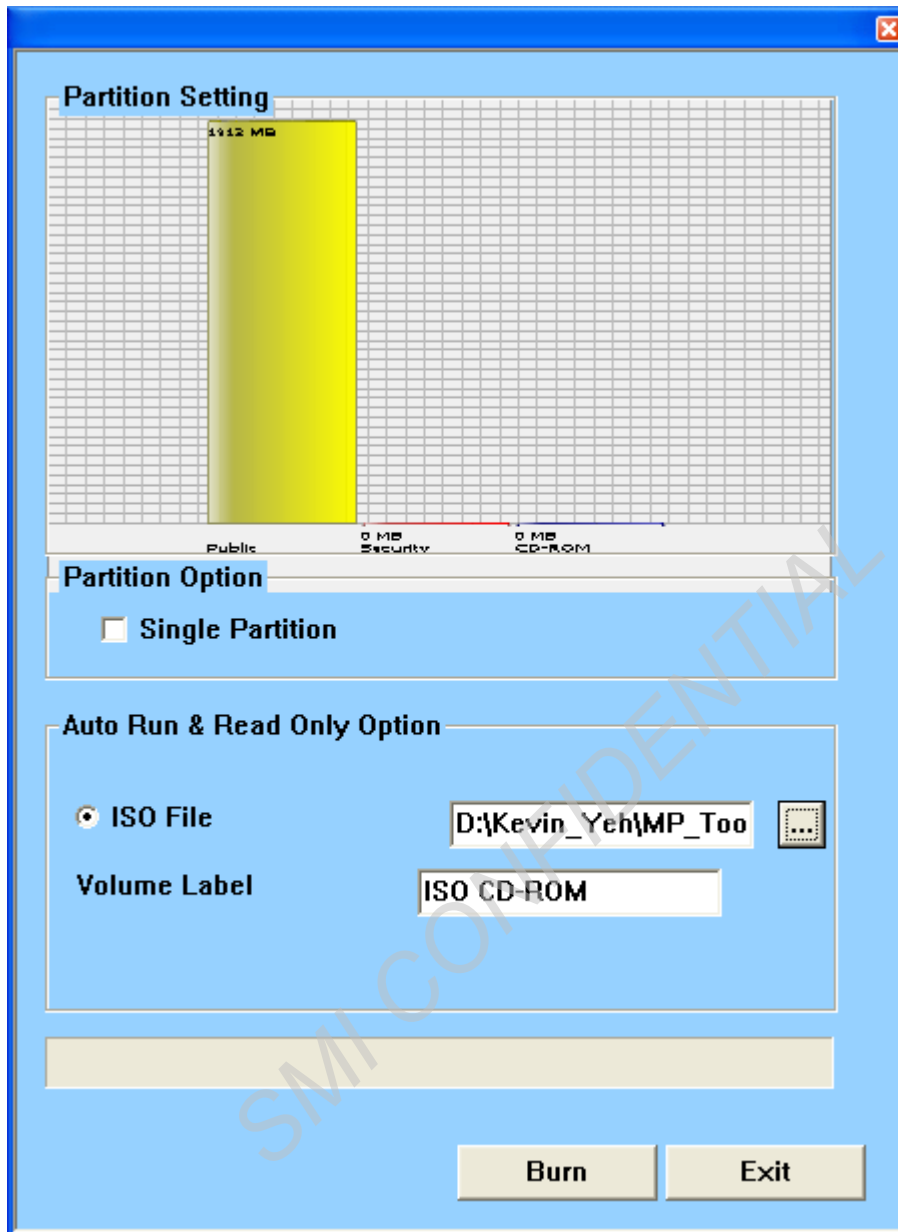
- Click “AutoRun Manager” on the UFD Utility bar.



- “AutoRun Manager” Window will pop up right after click as below



- Select the path to store “ISO File” .
- Input the volume label of the CDROM and click “Build”
- Click “Burn”.



- Click “Y” to finished it after pop up “Make CD-ROM success!” message



- After re-plug UFD device, you can look CD ROM disk area.

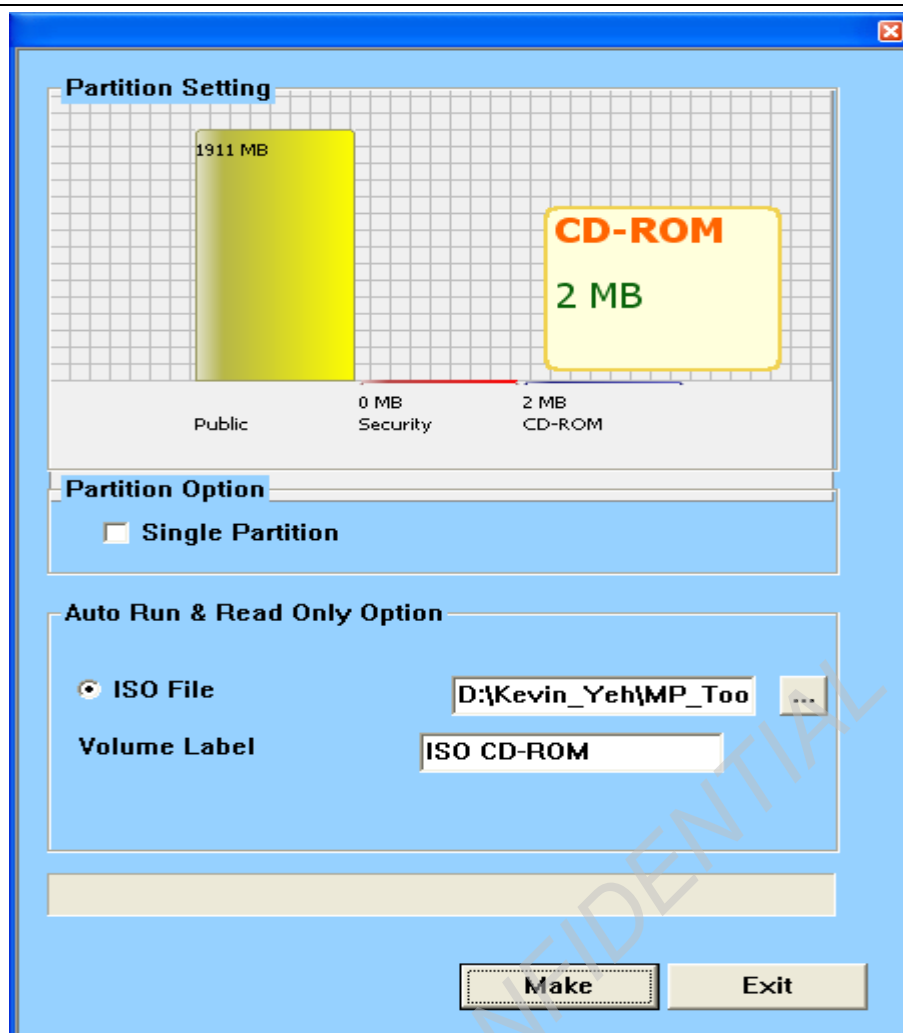


- The computer screen auto run content of ISO file.

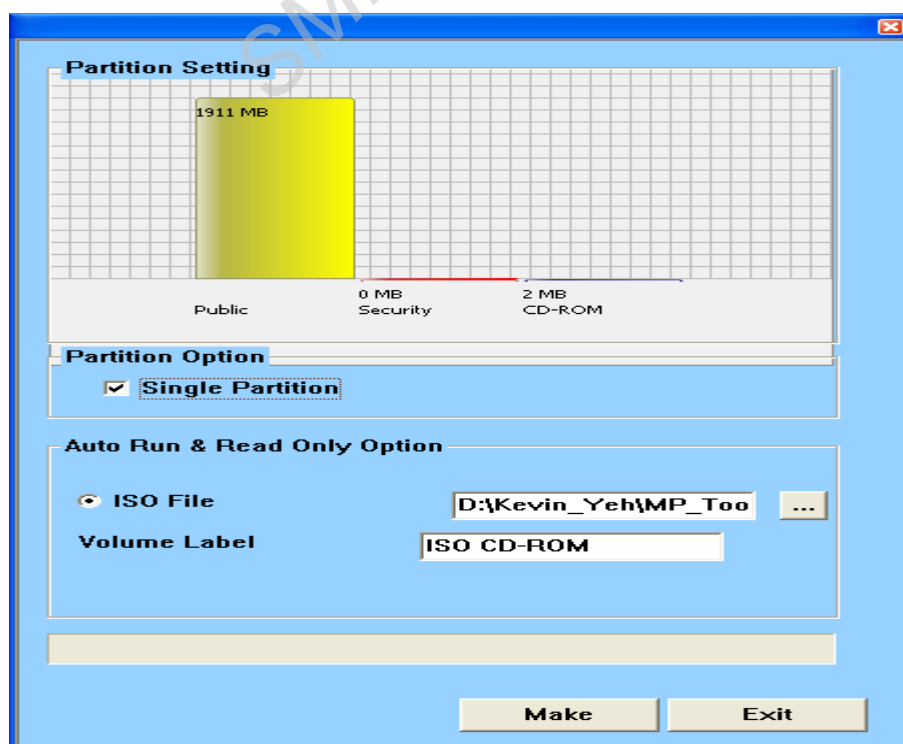


3.4.2 Restore to initial setting, single partition.

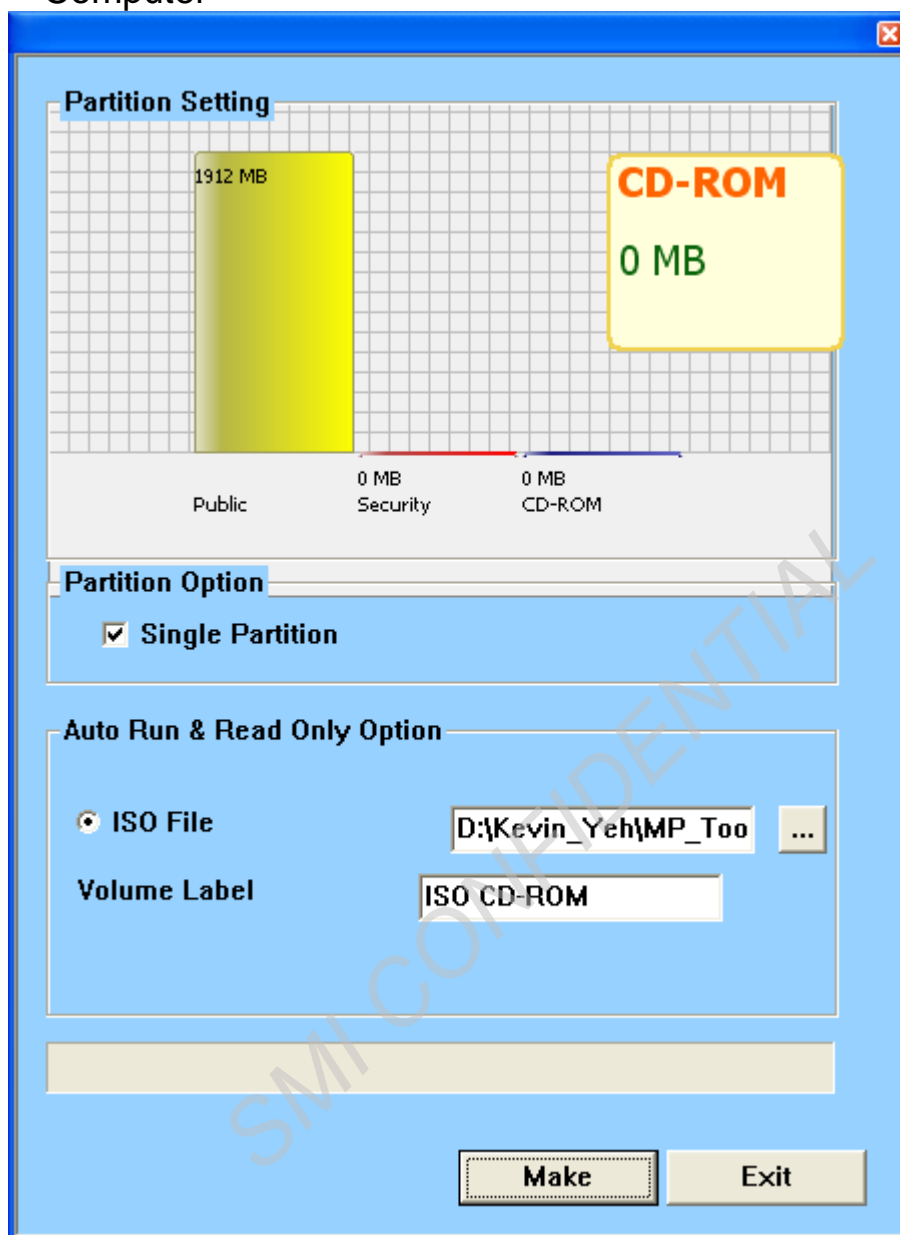
- In CD ROM making window, the device have the 2MB capacity CD ROM.



- Check "Single Partition" option, only one partition will be shown in left side. Click "Restore Default Setting" to restore original partitions

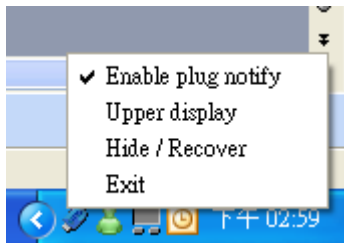


- After re-plug the UFD, only one “Removable Disk” will appear in “My Computer”



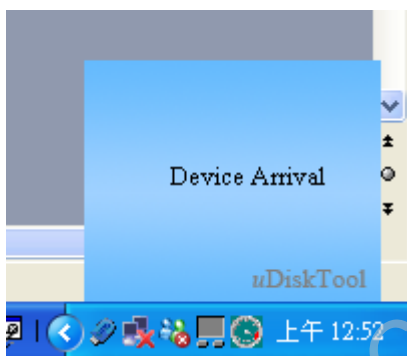
4. The icon appear in the tool Line

After run uDiskToolBar.exe, it will produce UFD icon in the tool line. And after click right button in mouse, it will show item as bellow,

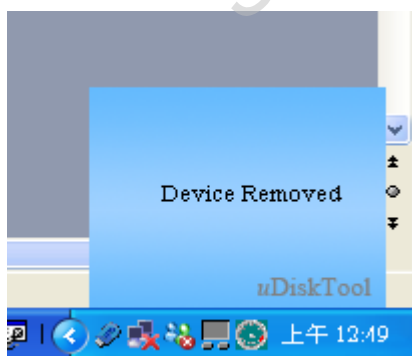


4.1 Enable plug notify

- Mark "Enable plug notify", when plug in SMI UFD device, the tool line show "Device Arrival".



- When plug out USB device, the tool line show "Device Removed"



4.2 Upper display

- Mark this item, it will show the top layer in the tool line.

4.3 Hide / Recover

- It will appear the uDiskToolBar in the tool line or not.

4.4 Exit

- Leave the uDiskToolBar

SMI CONFIDENTIAL

SMI CONFIDENTIAL

SMI CONFIDENTIAL